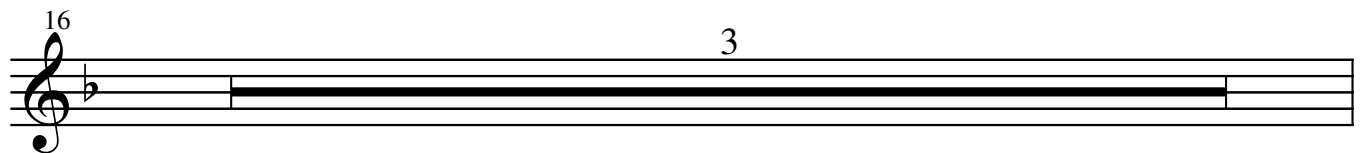
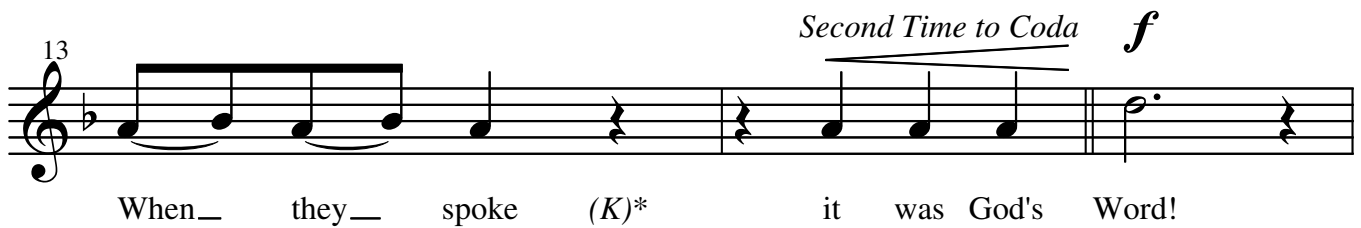
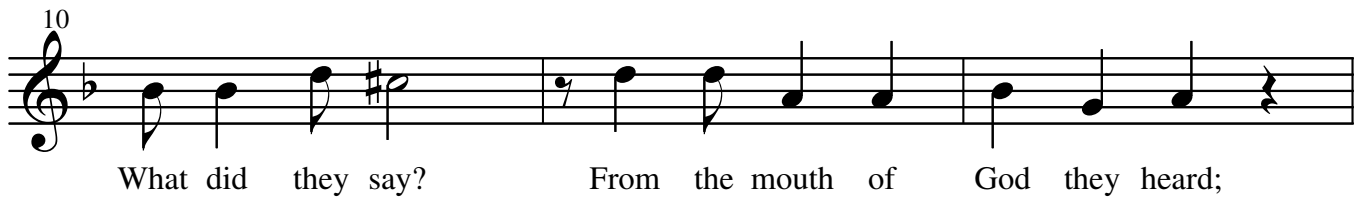
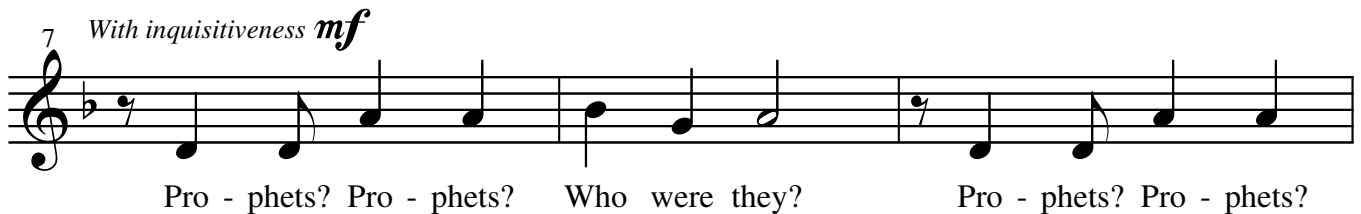
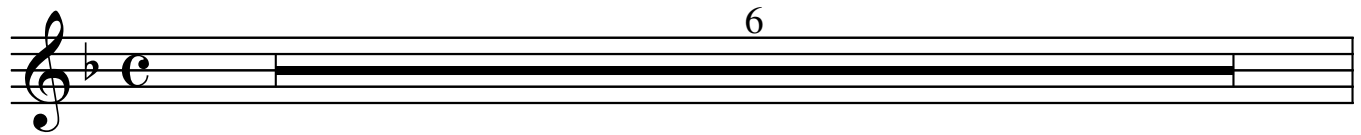


SINGERS

Prophets? Who Were They?

Words by R. G. Huff

Music by Vicki Hancock Wright



*Enunciate "K" on rest

© 2006 The Wright Music. All rights reserved.

Prophets - Singers 2

19 *mp*

God had pro - mised a great Mes - si - ah

Detailed description: A single musical staff in treble clef with a key signature of one flat (Bb). The melody consists of quarter and eighth notes, with some notes beamed together. The lyrics are written below the staff.

22

Through the pro - phets like Je - ri - mi - ah,

Detailed description: A single musical staff in treble clef with a key signature of one flat (Bb). The melody continues with quarter and eighth notes. The lyrics are written below the staff.

25 *mf* *f*

Mal - a - chi, I - sai - ah, A - mos, and O - ba - di - ah

a tempo

Detailed description: A single musical staff in treble clef with a key signature of one flat (Bb). The melody features a mix of quarter, eighth, and sixteenth notes. Dynamic markings *mf* and *f* are present. The tempo marking *a tempo* is at the end of the line. The lyrics are written below the staff.

29 *rit. dramatic*

They be - came quite fa - mous!

Detailed description: A single musical staff in treble clef with a key signature of one flat (Bb). The tempo marking *rit. dramatic* is at the beginning. The melody is slower and features quarter notes. The lyrics are written below the staff.

32 *mf* *f*

E - ze - kiel, Dan - iel, Ho - se - a, Jo - el;

Detailed description: A single musical staff in treble clef with a key signature of one flat (Bb). The melody includes quarter notes and a final chord with a fermata. Dynamic markings *mf* and *f* are present. The lyrics are written below the staff.

35 *rit.* *D.C. al Coda*

All the pro-phets were ver - y loy - al!

Detailed description: A single musical staff in treble clef with a key signature of one flat (Bb). The tempo marking *rit.* and the instruction *D.C. al Coda* are present. The melody features quarter notes and a final chord with a fermata. The lyrics are written below the staff.

40 \oplus CODA *f*

Word!

7

Detailed description: A single musical staff in treble clef with a key signature of one flat (Bb). It begins with a Coda symbol and the tempo marking *f*. The melody consists of a single note with a fermata, followed by a seven-measure rest. The lyrics are written below the staff.